
Kuala Terengganu Maintenance, Repair & Overhaul Complex (KT MRO)



The new regional narrow body commercial
aircraft maintenance solution provider

Your Horizon to Aviation



KT MRO Complex

The Complex

KT MRO Complex is a development project to construct a regional centre provider for aircraft maintenance, repair and overhaul (MRO) services. Within the complex there will be narrow body bays hangar facilities, apron, aircraft parking area, washing bay, bonded warehouse in the airtside as well as an Aviation College in the landsite.

The Location

KT MRO Complex is located in the 36-acre site adjacent to the Kuala Terengganu Sultan Mahmud Airport (IATA code TGG), Malaysia.

Services Offered

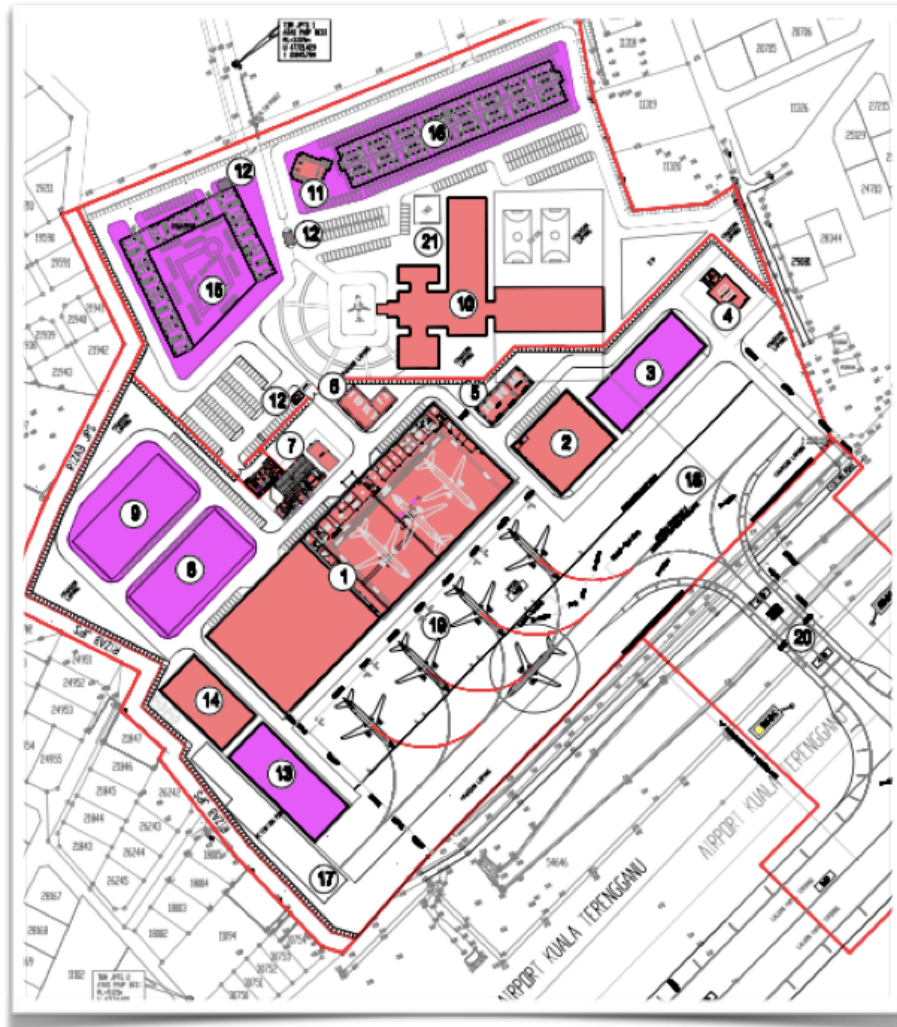
KT MRO will provide Base Maintenance and Line Maintenance for narrow body (single aisle) aircrafts such as Boeing 737s, Airbus A320s and ATR 72s.

Operational Timeline

Development Approval expected to receive by Q4 2017 and the construction starts in Q1/Q2 2018. Approval from certification bodies (DCA, FAA, EASA, DGCA and others by Q1/Q2 2020, and KT MRO Complex expected to be operational by Q3/Q4 2020.



KT MRO Development



KT MRO Complex Facilities

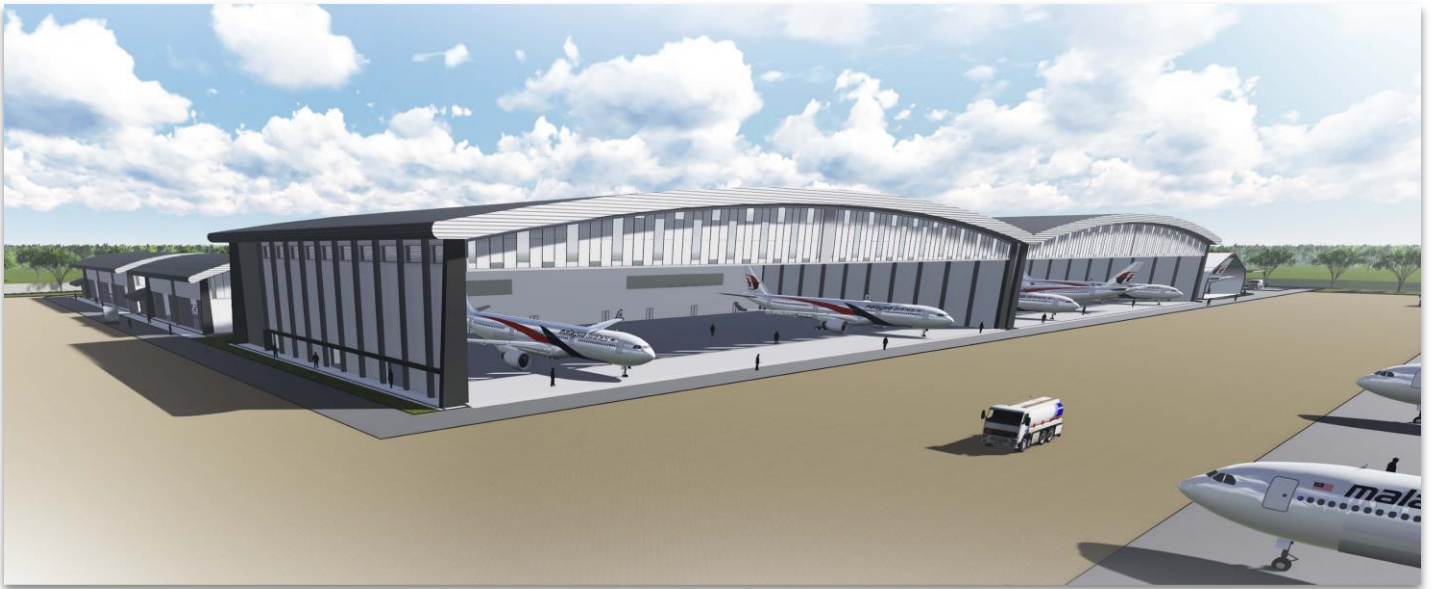
There will be a proposed build taxiway connected to KT MRO to the 4,570m runway at TGG. Each of the Hangar (No. 1 & 2) will accommodate 3 bays for narrow body aircrafts with 3 storey connecting office and workshops.

KT MRO will also have apron, aircraft parking areas, washing bay, and GSE holding area as well as refuelling station.

KT MRO Services Offered & Capability



- Line Maintenance
- Base Maintenance
- Heavy Maintenance
- Spare Parts and Component Support
- Engine, APU and LG Management
- Logistics and Customs Clearance
- Full Aircraft Engineering
- Technical Training
- License Aircraft Engineer Training
- Ground Handling
- Helicopter Services
- Aviation Supply Chain
- Aircraft Charter
- General Aviation
- Aviation College
- Refuelling Services



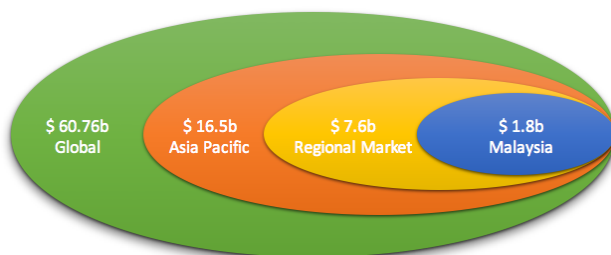
Kuala Terengganu Aircraft Maintenance, Repair and Overhaul Complex (KT MRO)

KT MRO Complex is a development project to construct a regional center provider for aircraft maintenance, repair and overhaul services (MRO).

KT MRO will act as one-stop-shop aircraft maintenance solutions' provider, serving customers from Malaysia, South East Asia and the Asia-Pacific region. Located in the 36-acre site adjacent to the Kuala Terengganu Sultan Mahmud Airport, the MRO centre will provide Base Maintenance and Line Maintenance services for narrow body (single aisle) aircrafts such as Boeing 737s, Airbus A320s and ATR 72s.



Based on the *Boeing 2015-2035 Report* as well as the *Airbus 2015-2035 Report*, there will be a tremendous global demand for narrow body aircrafts, especially in Asia where the demand is almost 40% or about 10,000 aircrafts for the next 20 years.



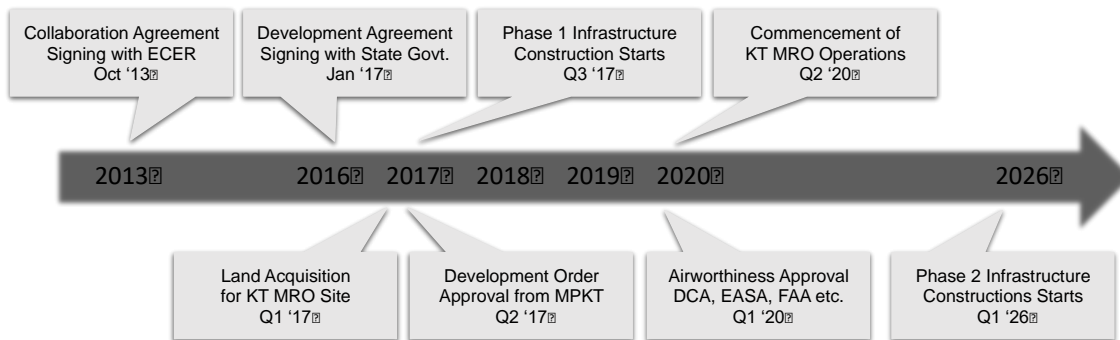
Accordingly, there will be a significant increase in the MRO business as according to a report by *MRO Network*, the MRO business volume in 2013 was about \$60.76 billion of which about \$7.6 billion from the South East Asia region at the growth rate of about 4.9% annually.

The Financial Projections

KT MRO business will be generated from, aviation training and supply chain activities. The annual growth will be expected to be around 18%.

Revenue CAGR: 18%
Total Assets CAGR: 15%
Gross Profit Avg.: 25%
ROI Avg.: 13%
ROE Avg.: 15%

Project Milestones



KT MRO Services Offered & Capability

- Line Maintenance
- Base Maintenance
- Heavy Maintenance
- Spare Parts and Component Support
- Engine, APU and LG Management Solutions
- Logistics and Customs Clearance
- Full Aircraft Engineering
- Technical Training
- License Aircraft Engineer Training
- Ground Handling
- Helicopter Services
- Aviation Supply Chain
- Aircraft Charter
- General Aviation
- Aviation College
- Refueling Services



KT MRO is part of the Malaysian Government East Coast Economic Region (ECER) and Terengganu State Government Unit Perancang Ekonomi Negeri (UPEN) development initiatives through promotion and facilitation of private investments into the East Coast Region.

This is in line with the Economic Transformation Programme (ETP). KT MRO Complex will also enable direct employment in MRO industry. It is estimated that the complex will employ about 660 knowledge workers for MRO hangar activities, the Aviation College and the aviation supply chain activities once the KT MRO



Complex is fully operational.

DCA APPROVALS:
PART 147 ATO (ATO/2015/03)
PART 145 AMO (AO/0243/14)

ADMAL SDN BHD
NO. 24-34, BBST BUSINESS PARK, JALAN 2 MEDAN 120
BANDAR BARU SALAK TINGGI, 43900 SEPANG, SELANGOR
Tel: +603 87067800/7900 www.admal.com.my